

## **AIR TRAFFIC AND NAVIGATION SERVICES SOC. LTD REPUBLIC OF SOUTH AFRICA**



**REQUEST FOR PROPOSALS: ATNS/TPQ/RFP049/FY23.24/ATFM REPLACEMENT SYSTEM**

**APPOINTMENT OF A SERVICE PROVIDER FOR THE SUPPLY, DELIVERY, INSTALLATION AND COMMISSIONING OF AN AIR TRAFFIC FLOW MANAGEMENT (ATFM) SYSTEM TO BE DEPLOYED IN THE MAIN ATC CENTRE AT THE O. R. TAMBO INTERNATIONAL AIRPORT (JOHANNESBURG). THE PROJECT WILL FURTHERMORE ESTABLISH A DISASTER RECOVERY PLATFORM (TO BE DEPLOYED IN THE FAOR SSS BUILDING) AND A TRAINING SIMULATION PLATFORM (AT THE ATNS ATA (ATNS AVIATION TRAINING ACADEMY).**

### **Volume 2 - Appendix**

## **TECHNICAL SPECIFICATIONS APPENDIX**

**FEBRUARY 2024**

The information contained within this document is confidential to ATNS in all respects and it is hereby acknowledged that the information as provided shall only be used for the preparation of a response to this document. The information furnished will not be used for any other purpose than stated and that the information will not directly or indirectly, by agent, employee or representative, be disclosed either in whole or in part, to any other third party without the express written consent by the Company or its representative.

## TABLE OF CONTENTS

<b>1</b>	<b>APPENDIX-A: EXAMPLES OF REPORTS.....</b>	<b>4</b>
1.1	EUROCONTROL REPORT EXAMPLE.....	4
1.2	TMI MONTHLY STATISTICS REPORT EXAMPLE .....	5
1.3	DAILY DEPARTURE FLIGHT LIST REPORT EXAMPLE .....	6
1.4	DAILY ARRIVAL FLIGHT LIST REPORT EXAMPLE .....	7
<b>2</b>	<b>APPENDIX B: NMMS REPORTS.....</b>	<b>8</b>
2.1	DEVICE AVAILABILITY REPORT EXAMPLE .....	8
2.2	DEVICE PORT DETAILS .....	9
2.3	NETWORK REPORT EXAMPLE.....	10
<b>3</b>	<b>APPENDIX-C: CHART AND GRAPH REPORTING EXAMPLES .....</b>	<b>11</b>
3.1	NETWORK INCOMING AND OUTGOING TRAFFIC BAR-GRAPH REPORT EXAMPLE.....	11
3.2	HOST DISTRIBUTION AND CPU & MEMORY YEARLY TREND REPORTS EXAMPLES.....	12
<b>4</b>	<b>APPENDIX-D: DASHBOARD EXAMPLES.....</b>	<b>13</b>
4.1	DEVICE SUMMARY DASHBOARD EXAMPLE .....	13
4.2	VM INFORMATION DASHBOARD EXAMPLE.....	14
4.3	NETWORK DASHBOARD EXAMPLE .....	15
4.4	PERFORMANCE DASHBOARD EXAMPLE.....	16
4.5	HOST SERVICE STATUS DASHBOARD EXAMPLE .....	17
4.6	COMPLETE DASHBOARD EXAMPLE .....	18

**TABLE OF FIGURES**

FIGURE 1: EXAMPLE OF AN EUROCONTROL REPORT LAYOUT AND DISPLAY EXAMPLE .....	4
FIGURE 2: TMI MONTHLY STATISTICS REPORT EXAMPLE .....	5
FIGURE 3: FLIGHT LIST DAILY DEPARTURE REPORT EXAMPLE FOR FAOR AIRPORT (FULL DATE SHOULD BE INCLUDED AS WELL) .....	6
FIGURE 4: FLIGHT LIST DAILY ARRIVAL REPORT EXAMPLE FOR FAOR AIRPORT (FULL DATE SHOULD BE INCLUDED AS WELL) .....	7
FIGURE 5: DEVICE AVAILABILITY REPORT EXAMPLE .....	8
FIGURE 6: PORT DETAILS REPORT EXAMPLE .....	9
FIGURE 7: NETWORK COMPONENT INTERCONNECTION LAYOUT AND MULTIPLE DISTRIBUTED DEVICES REPORT EXAMPLE .....	10
FIGURE 8: NETWORK INCOMING AND OUTGOING TRAFFIC BAR-GRAPH REPORT EXAMPLE .....	11
FIGURE 9: HOST DISTRIBUTION AND CPU & MEMORY YEARLY TREND REPORTS EXAMPLES .....	12
FIGURE 10: DEVICE SUMMARY REPORT EXAMPLE .....	13
FIGURE 11: VM INFORMATION REPORT EXAMPLE .....	14
FIGURE 12: NETWORK DASHBOARD AND NETWORK REPORT EXAMPLE .....	15
FIGURE 13: PERFORMANCE REPORT EXAMPLE .....	16
FIGURE 14: HOST SERVICE STATUS REPORT EXAMPLE .....	17
FIGURE 15: COMPLETE DASHBOARD EXAMPLE .....	18

## 1 APPENDIX-A: EXAMPLES OF REPORTS

### 1.1 Eurocontrol Report Example

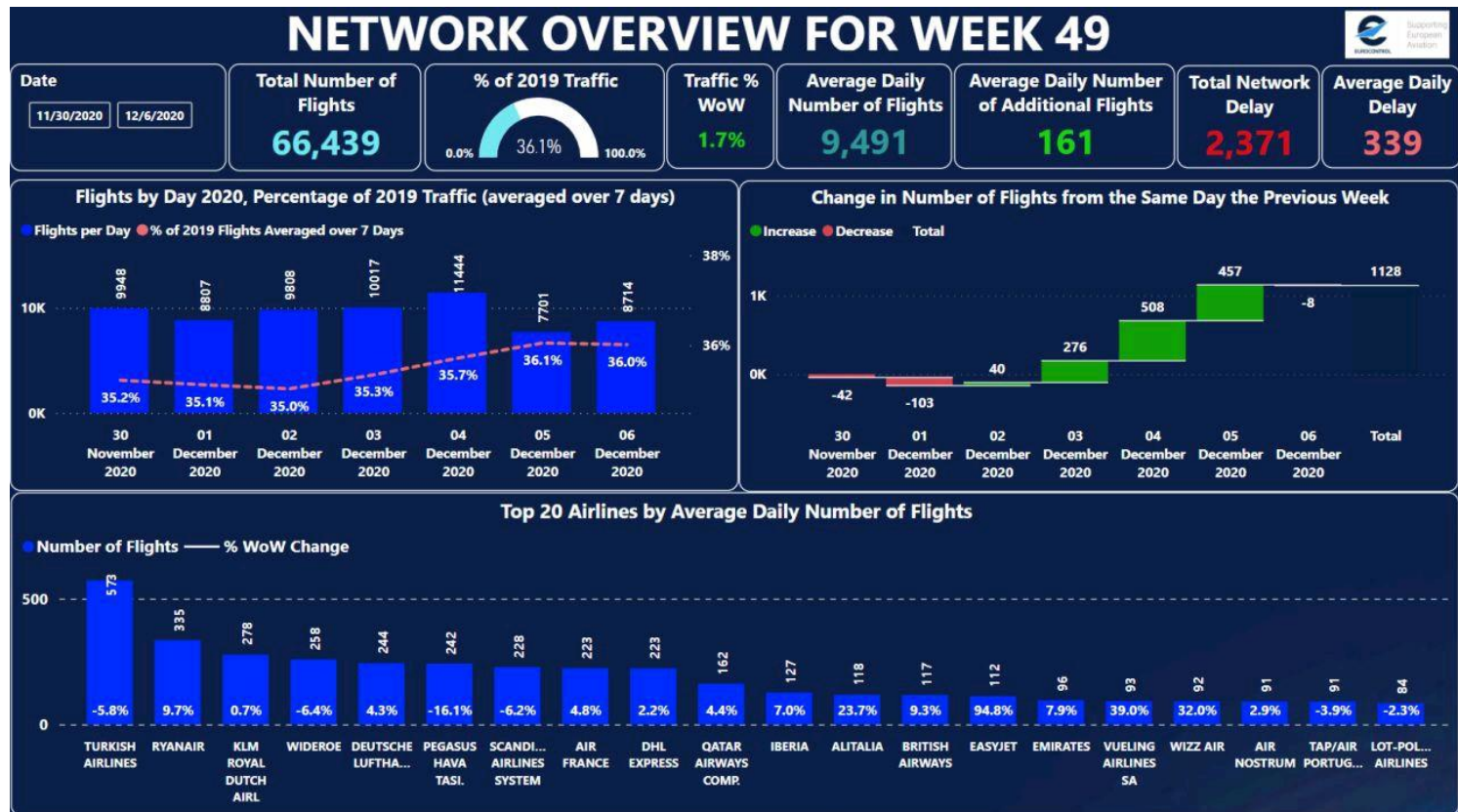


Figure 1: Example of an Eurocontrol Report Layout and Display Example

## 1.2 TMI Monthly Statistics Report Example

DATE	DAY	FA M	STATION	PERIOD	ACTUAL	AVERAGE DELAY IN MINUTES	ARR/ADR	TMI DURATION	REMARK	TMI Discrepancies	WX	ATC STAFF	ILS CLBR	OTHER
01-Mar-20	Sun													
02-Mar-20	Mon	Y	FACT	0700-1100	0700-1100	8.3 / 6.3	24/HR COMBINED	04:00	SE82 - STAFF SHORTAGE			04:00		
		Y	FAOR	1300-1800	1300-1800	14.4 / 16.1	25/HR ARRIVALS	05:00	WA84 - TMI DUE TO FORECASTED WEATHER.		05:00			
03-Mar-20	Tue	Y	FAOR	0600-0700	TMI CANCELLED BEFORE 0600	N/A	32/HR COMBINED	00:00	WA84 - TMI DUE TO FORECASTED WEATHER.	TMI CANCELLED BEFORE 0600				
		Y	FACT	1100-1800	1100-1800	23.0 / 28.2	19/HR COMBINED	07:00	SA83 - STAFF SHORTAGE			07:00		
04-Mar-20	Wed	Y	FAOR	0500-0600	0500-0600	11.3 / 5.8	16/HR COMBINED	01:00	WA84 - TMI DUE TO FORECASTED WEATHER.		01:00			
		Y	FAOR	0600-0800	TMI CANCELLED BEFORE 0600	N/A	23/HR COMBINED	00:00	WA84 - TMI DUE TO FORECASTED WEATHER.	TMI CANCELLED BEFORE 0600				
05-Mar-20	Thu													
06-Mar-20	Fri													
07-Mar-20	Sat													
08-Mar-20	Sun													
09-Mar-20	Mon													
10-Mar-20	Tue													
11-Mar-20	Wed	Y	FACT	0800-1300	0800-1300	6.7 / 11.2	20/HR COMBINED	05:00	TE82 - RADAR MAINTENANCE					05:00
12-Mar-20	Thu	Y	FAOR	1300-1800	1300-1800	13.8 / 12.6	24/HR ARRIVALS	05:00	WA84 - TMI DUE TO FORECASTED WEATHER.		05:00			
13-Mar-20	Fri													
14-Mar-20	Sat													
15-Mar-20	Sun													
16-Mar-20	Mon													
17-Mar-20	Tue													
18-Mar-20	Wed													
19-Mar-20	Thu													
20-Mar-20	Fri													
21-Mar-20	Sat													
22-Mar-20	Sun													
23-Mar-20	Mon													
24-Mar-20	Tue													
25-Mar-20	Wed													
26-Mar-20	Thu													
27-Mar-20	Fri													
28-Mar-20	Sat													
29-Mar-20	Sun													
30-Mar-20	Mon													
								27:00:00			11:00:00	11:00:00	0:00:00	5:00:00

Figure 2: TMI Monthly Statistics Report Example

### 1.3 Daily Departure Flight List Report Example

ACID	ADEP	ADES	CTOT-IOBT	CTL_TYPE	ETD	CTOT	ATOT	IOBT	POBT	CTOT-POBT	ATOT-CTOT
FDR245	FAOR	FAUS	1	SUB	A14/1004	14/0931	14/1004	14/0930	14/0931	0	33
LNK214	FAOR	FQBR	11	GDP	A14/1016	14/0951	14/1016	14/0940	14/0945	6	25
LNK306	FAOR	FBKE	8	SUB	A14/1009	14/0953	14/1009	14/0945	14/0950	3	16
LNK853	FAOR	FAPH	10	GDP	A14/1018	14/0955	14/1018	14/0945	14/0950	5	23
LNK300	FAOR	FBMN	12	GDP	A14/1014	14/0957	14/1014	14/0945	14/0920	37	17
MNO529	FAOR	FAPE	20	GDP	A14/1011	14/1000	14/1011	14/0940	14/0950	10	11
BOT212	FAOR	FBMN	48	SUB	A14/1019	14/1003	14/1019	14/0915	14/0925	38	16
CAW413	FAOR	FACT	167	GAAP	C14/1057	14/1012	-	14/0725	14/1010	2	-
LNK757	FAOR	FAUT	13	GDP	A14/1022	14/1013	14/1022	14/1000	14/1010	3	9
CAW103	FAOR	FACT	24	GDP	A14/1026	14/1014	14/1026	14/0950	14/0955	19	12
CAW275	FAOR	FYWH	17	GDP	A14/1028	14/1017	14/1028	14/1000	14/1005	12	11
SFR216	FAOR	FACT	21	GDP	A14/1024	14/1021	14/1024	14/1000	14/1005	16	3
SAA6728	FAOR	FLKK	23	GAAP	A14/1043	14/1023	14/1043	14/1000	14/1005	18	20
TAM8059	FAOR	SBGR	5	ECR	A14/1030	14/1025	14/1030	14/1020	14/1020	5	5
LNK735	FAOR	FAPM	12	GAAP	A14/1035	14/1027	14/1035	14/1015	14/1020	7	8
KQA761	FAOR	HKJK	20	GDP	A14/1032	14/1030	14/1032	14/1010	14/1015	15	2
LNK443	FAOR	FARB	56	GAAP	A14/1013	14/1031	14/1013	14/0935	14/1031	0	-18
KEM828	FAOR	FYOA	148	SUB	A14/1036	14/1033	14/1036	14/0805	14/1045	-12	3
MNO139	FAOR	FACT	10	GDP	A14/1036	14/1035	14/1036	14/1025	14/1030	5	1
SAA048	FAOR	FLHN	119	SUB	A14/1038	14/1039	14/1038	14/0840	14/1020	19	-1
EXY227	FAOR	FAHS	28	SUB	A14/1045	14/1043	14/1045	14/1015	14/1050	-7	2
ZSSGO	FAOR	FAKR	15	GDP	A14/1007	14/1045	14/1007	14/1030	14/0935	70	-38
CAW417	FAOR	FACT	7	SUB	A14/1047	14/1047	14/1047	14/1040	14/1047	0	0
FDRTRN1A	FAOR	FASI	31	SUB	C14/1056	14/1051	-	14/1020	14/1020	31	-
EXY769	FAOR	FBSK	13	GDP	C14/1058	14/1053	-	14/1040	14/1105	-12	-
CAW211	FAOR	FALE	10	SCOR	A14/1052	14/1055	14/1052	14/1045	14/1050	5	-3

Figure 3: Flight List Daily Departure Report Example for FAOR Airport (Full Date should be included as well)

#### 1.4 Daily Arrival Flight List Report Example

ACID	ADEP	ADES	CTOT-IOBT	CTL_TYPE	ETD	ATOT	CTOT	IOBT	POBT	CTOT-POBT	ATOT-CTOT	ETA
SAA143	FQMA	FAOR	12	GDP	A14/0915	14/0915	14/0942	14/0930	14/0935	7	-27	A14/1003
CAW234	FAPE	FAOR	20	GDP	A14/0843	14/0843	14/0845	14/0825	14/0830	15	-2	E14/1003
LNK852	FAHS	FAOR	-5	SUB	A14/0921	14/0921	14/0915	14/0920	14/0925	-10	6	E14/1005
SAA550	FALE	FAOR	6	SUB	A14/0919	14/0919	14/0916	14/0910	14/0915	1	3	E14/1006
ZSCCK	FAOR	FAOR	98	ECR	A14/0906	14/0906	14/0858	14/0720	14/0834	24	8	A14/1008
EXY766	FBSK	FAOR	10	GDP	A14/0933	14/0933	14/0946	14/0936	14/0930	16	-13	A14/1010
CAW222	FALE	FAOR	-4	SUB	A14/0929	14/0929	14/0926	14/0930	14/0935	-9	3	A14/1015
FDR335	FAMK	FAOR	3	SUB	A14/0916	14/0916	14/0916	14/0913	14/0920	-4	0	E14/1015
FDR250	ZZZZ	FAOR	-1	SUB	A14/0900	14/0900	14/0854	14/0855	14/0855	-1	6	A14/1018
EXY006	FABL	FAOR	-18	SUB	A14/0942	14/0942	14/0942	14/1000	14/0942	0	0	E14/1027
MNO258	FALE	FAOR	10	SUB	A14/0948	14/0948	14/0950	14/0940	14/0950	0	-2	A14/1031
LNK810	FAPP	FAOR	10	GDP	A14/1000	14/1000	14/1005	14/0955	14/1000	5	-5	A14/1034
REU341	FMEE	FAOR	10	GDP	A14/0642	14/0642	14/0650	14/0640	14/0645	5	-8	E14/1037
AZW467	FVRG	FAOR	1	GAAP	A14/0909	14/0909	14/0906	14/0905	14/0905	1	3	A14/1039
OPM104	FAPN	FAOR	2	GAAP	A14/1011	14/1011	14/1002	14/1000	14/1035	-33	9	E14/1042
EXY272	FALE	FAOR	-8	SUB	A14/0950	14/0950	14/0952	14/1000	14/1005	-13	-2	E14/1043
ETH809	HAAB	FAOR	10	GDP	A14/0559	14/0559	14/0600	14/0550	14/0555	5	-1	E14/1049
SIA479	FACT	FAOR	13	GDP	A14/0920	14/0920	14/0853	14/0840	14/0845	8	27	E14/1053
SEY061	FSIA	FAOR	25	GDP	A14/0635	14/0635	14/0541	14/0516	14/0530	11	54	A14/1056

Figure 4: Flight List Daily Arrival Report Example for FAOR Airport (Full Date should be included as well)

## 2 APPENDIX B: NMMS REPORTS

### 2.1 Device Availability Report Example

Device Availability and Model		
Over the 1 day period Wed Jun 15 2005 - Thu Jun 16 2005		
No prime time is set for this report		
Generated at 13:25 on Thu Jun 16 2005 for the <b>Regional</b> view		
Monitored Device Details		
Name	Component Availability (Mean)	Model
hali	80%	7200
10.18.149.72	85%	s72033_rp
10.18.149.75	85%	WS-C6509.Cisco
10.18.149.76	85%	Summit48i
10.18.149.73	91%	WS-C6509.Cisco
10.18.149.74	93%	WS-C6509.Cisco
10.18.149.77	100%	Summit48i
10.18.3.34	100%	2611
10.44.1.2	100%	WSX5302
IP129	100%	x86
12.18.149.140	100%	x86
12.18.149.150	100%	2GG
12.18.149.163	100%	WS-C6513
12.18.149.164	100%	WS-C3750G-24TS-S
12.18.149.161	100%	C2950
12.18.149.160	100%	4000
12.18.149.158	100%	1XX
12.18.149.152	100%	Layer2-7
IOALANA	100%	7513
HUKO	100%	7507
10.44.1.13	100%	2503
10.44.1.12	100%	WS-C3550-24-EMI
10.44.1.7	100%	WS-C5505
10.44.1.5	100%	WS-C5505
10.44.1.6	100%	WS-C5505
12.18.149.165	100%	C2950Ire
12.18.149.162	100%	C2950
12.18.149.149	100%	1XX

Figure 5: Device Availability Report Example



## 2.2 Device Port Details

### Port Details

Over the 1 day period Tue Sep 13 2005 - Wed Sep 14 2005

No prime time is set for this report

Generated at 12:11 on Wed Sep 14 2005 for the Regional view

Port Details				
Device Name	Interface Description	Host Mac	Host IP	Host Name
Switch_2	[ 11/23 ] EYE Server 03	0F10111220F8	10.49.110.10	sapphire
Switch_2	[ 11/22 ] London PC-368	0F10111220FC	10.54.98.10, 10.54.98.11, 10.54.98.12, 10.54.98.13, 10.54.98.14, 10.54.98.15, 10.54.98.16, 10.54.98.17, 10.54.98.18, 10.54.98.19, 10.54.98.20, 10.54.98.21, 10.54.98.22, 10.54.98.23, 10.54.98.24, 10.54.98.25, 10.54.98.26	sapphire diamond gold ruby copper zircon brass pewter emeralds steel iron platinum zinc silver aluminium
Switch_2	[ 11/21 ] London PC-367	0F1011123151	--	
Switch_2	[ 11/20 ] London PC-366	0F1011121476	10.54.98.178	bluejohn
Switch_2	[ 11/19 ] London PC-365	0F1011121FE2	10.49.80.14	ruby
Switch_2	[ 11/18 ] London PC-364	0F1011122002	10.49.80.73	coal
Switch_2	[ 11/17 ] 10.54.166.173	--	--	
Switch_2	[ 11/16 ] 10.54.166.175	--	--	
Switch_2	[ 11/15 ] 10.54.166.220	--	--	
Switch_2	[ 11/14 ] 10.54.166.228	0F1011122115	10.54.166.228	nickel
Switch_2	[ 11/13 ] 10.54.166.222	0F10111213FE	10.54.166.222	lead
Switch_2	[ 2 ] s10	--	--	
Switch_2	[ 11/12 ] 10.54.166.218	0F1011122087	10.54.166.218	tungsten
Switch_2	[ 11/11 ] 10/100 utp ethernet (cat 3/5)	--	--	
Switch_2	[ 11/10 ] London PC-363	--	--	
Switch_2	[ 11/9 ] London PC-362	0F1011122001	10.49.80.72	titanium
Switch_2	[ 11/8 ] London PC-361	0F101112146B	10.54.98.88	tantalum
Switch_2	[ 11/7 ] London Fax	0F1011121419	10.54.98.155	colombium

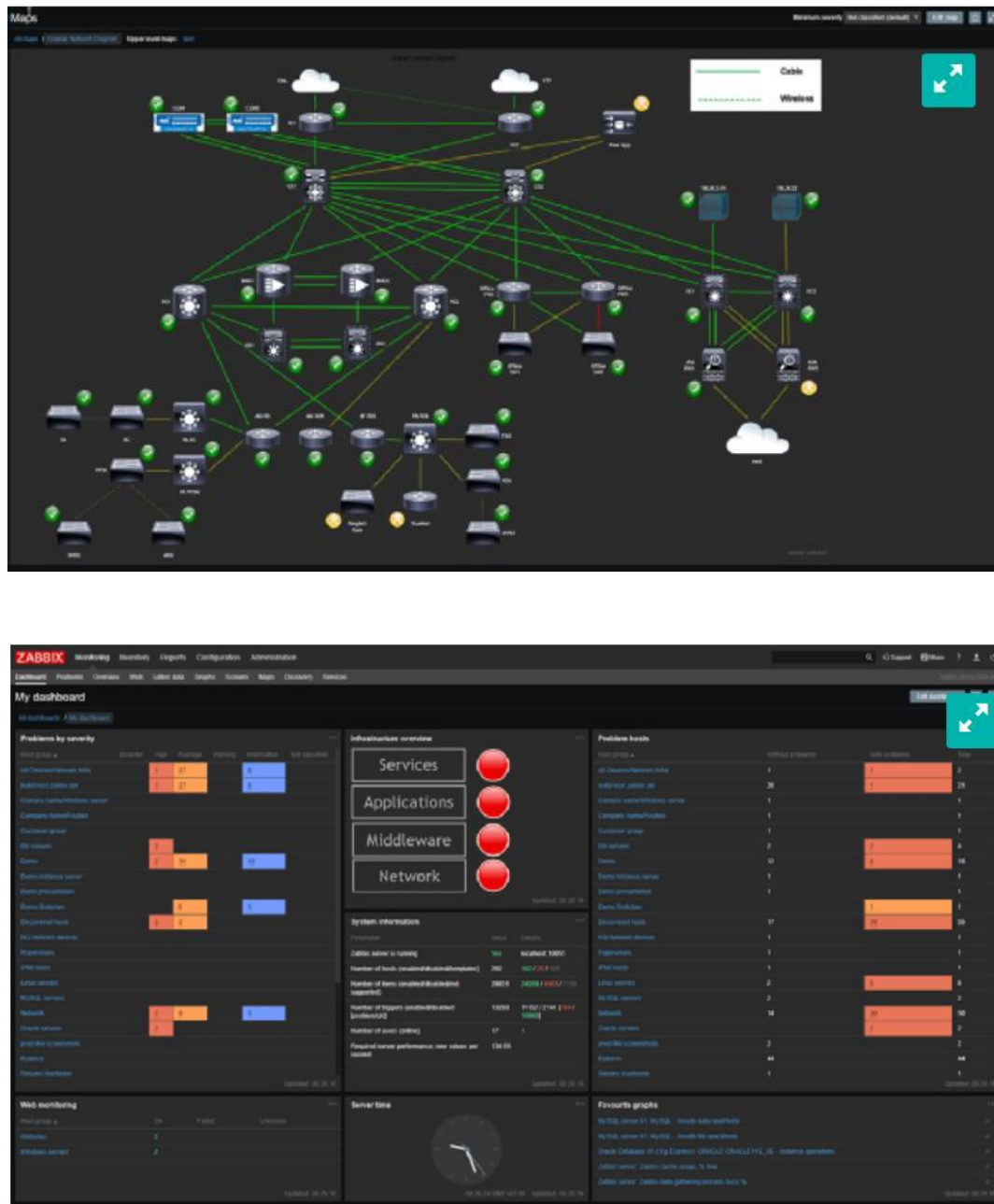
Entuity © 2005

1

Confidential

Figure 6: Port Details Report Example

## 2.3 Network Report Example



**Figure 7: Network Component Interconnection Layout and Multiple Distributed Devices Report Example**

### 3 APPENDIX-C: CHART AND GRAPH REPORTING EXAMPLES

#### 3.1 Network Incoming and Outgoing Traffic Bar-Graph Report Example

BAR\_REPORTS1.PNG

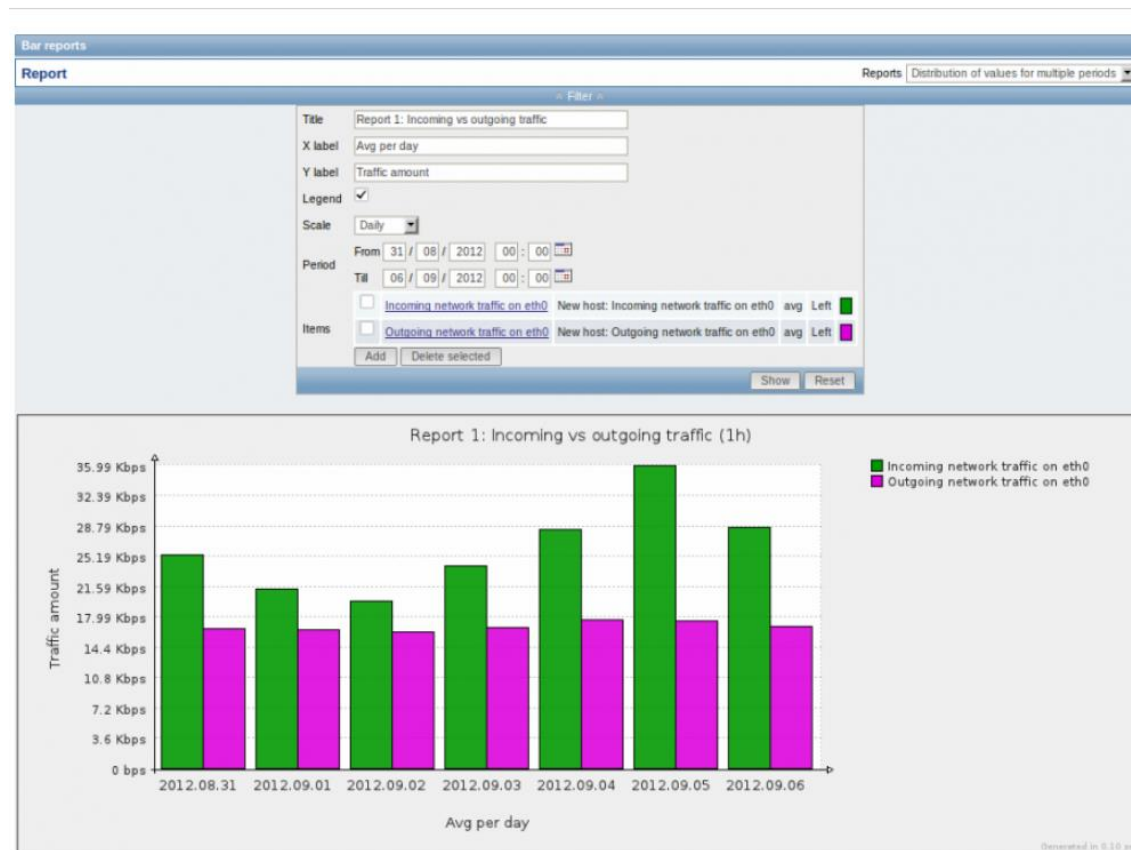


Figure 8: Network Incoming and Outgoing Traffic Bar-Graph Report Example

### 3.2 Host Distribution and CPU & Memory Yearly Trend Reports Examples

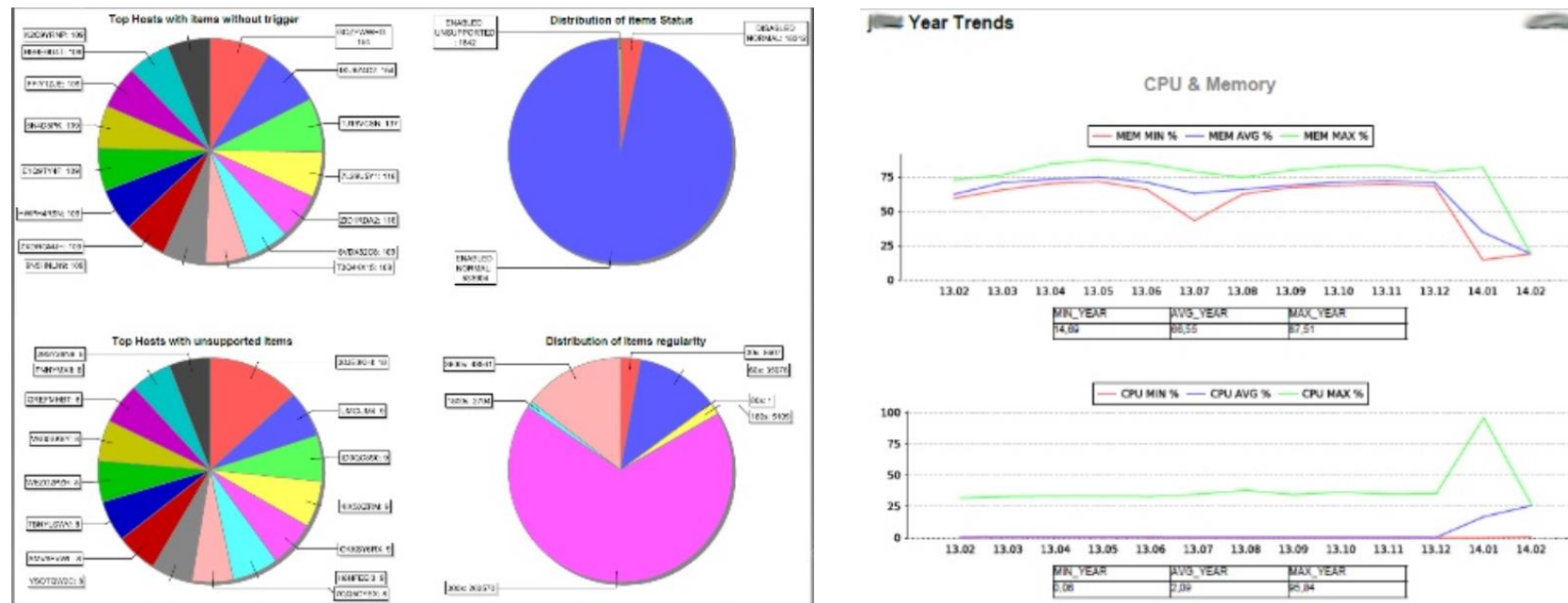


Figure 9: Host Distribution and CPU & Memory Yearly Trend Reports Examples

## 4 APPENDIX-D: DASHBOARD EXAMPLES

### 4.1 Device Summary Dashboard Example

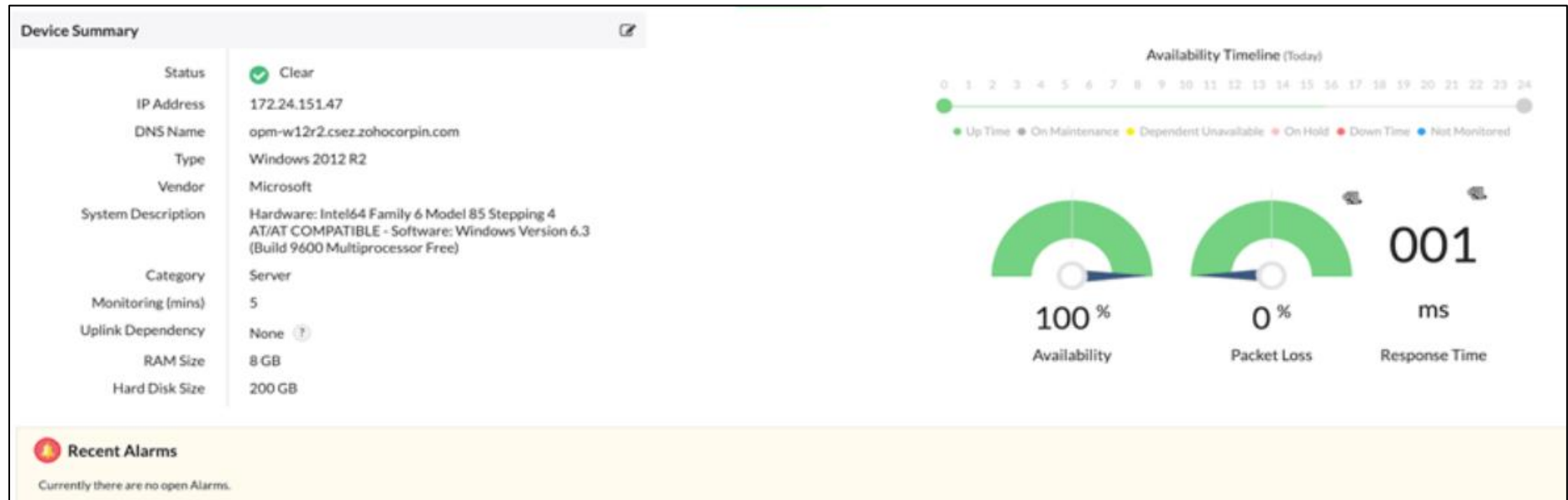


Figure 10: Device Summary Report Example

## 4.2 VM Information Dashboard Example

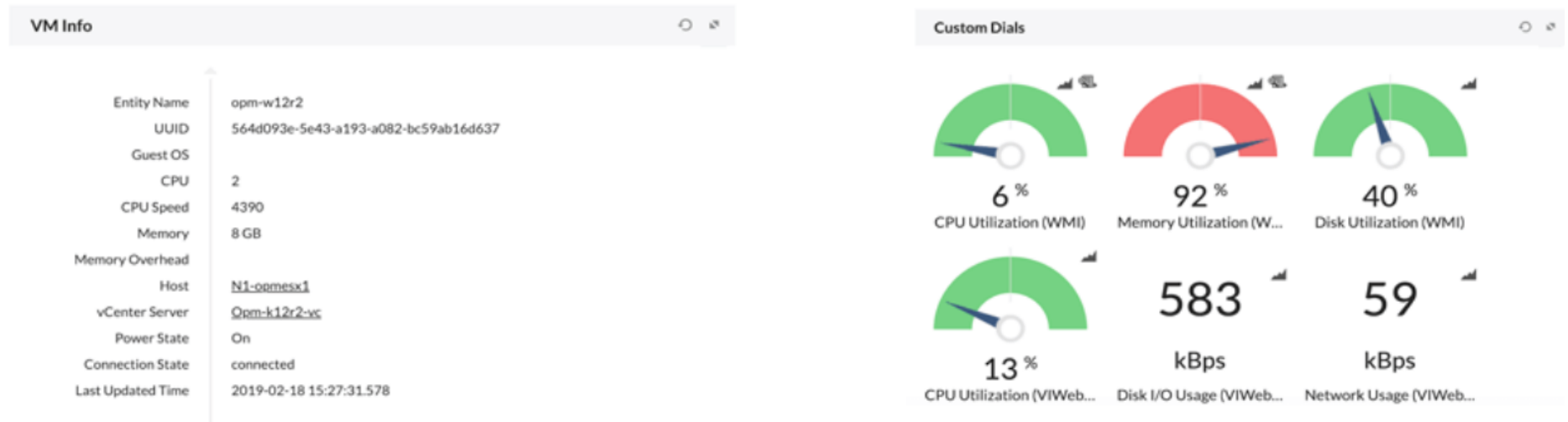


Figure 11: VM Information Report Example

### My Network

#### My Network Contents

	NAME	DEVICE	TYPE
1	All Managed Devices		group
1	Default SmartGroups		group
1	workstations		group
1	ipMonitor Host		device
1	Subnets		group
1	Orphaned Objects		group

#### Monitors, Grouped by Properties

- 1 Monitors
  - warn
  - up
  - lost
  - disabled

#### My Reports

My Reports

- ipMonitor Host Resources Group
- ipMonitor Host Resources Monitors

System Reports

- System Status

Group Reports

- CPU Utilization
- Disk Utilization
- Interface Traffic
- Memory Utilization
- Monitor Availability
- Monitor Downtime
- Ping Availability

### Do more with ipMonitor

You have 301 monitors remaining in your license.

We found 1 devices that need to be added. To add additional monitors, you will need to upgrade your license.

301 Remaining monitors  
199 Used monitors

22 Added devices  
1 Unmonitored devices

Contact Us to Buy More

### Map: workstations

### Top 10 Devices by Ping

NAME	RESPONSE TIME
10.199.20.253	10ms
Workstation_Michael Gonzalez	3ms
10.199.20.1	2ms
Workstation_Heather Butler	0ms
Workstation_Joan Lewis	0ms
Workstation_Carol Green	0ms
Workstation_Lori Rivera	0ms
Workstation_Kathleen Watson	0ms
Workstation_Sandra Roberts	0ms
Workstation_Earl Smith	0ms

### Devices with Down Monitors

DEVICE NAME	# DOWN	TIME DOWN
Workstation_Sandra Roberts	3	6 hours, 33 minutes, 1
Workstation_Jonathan Griffin	2	2 hours, 3 minutes, 51
Workstation_Earl Smith	2	6 hours, 34 minutes, 1

### Top 10 Devices by CPU Utilization

NAME	LOAD (%)
Workstation_Charles Murphy	53.45%
Workstation_Anne Howard	49.40%
ipMonitor Host	26.30%
Workstation_Lori Rivera	16.67%
Workstation_Jonathan Griffin	7.54%
Workstation_Philip Brown	5.00%
Workstation_Carolyn Gray	3.08%

### Top 10 Devices by Disk Utilization

NAME	USED (%)
Workstation_Jonathan Griffin	81.00%

**Figure 12: Network Dashboard and Network Report Example**



## 4.4 Performance Dashboard Example

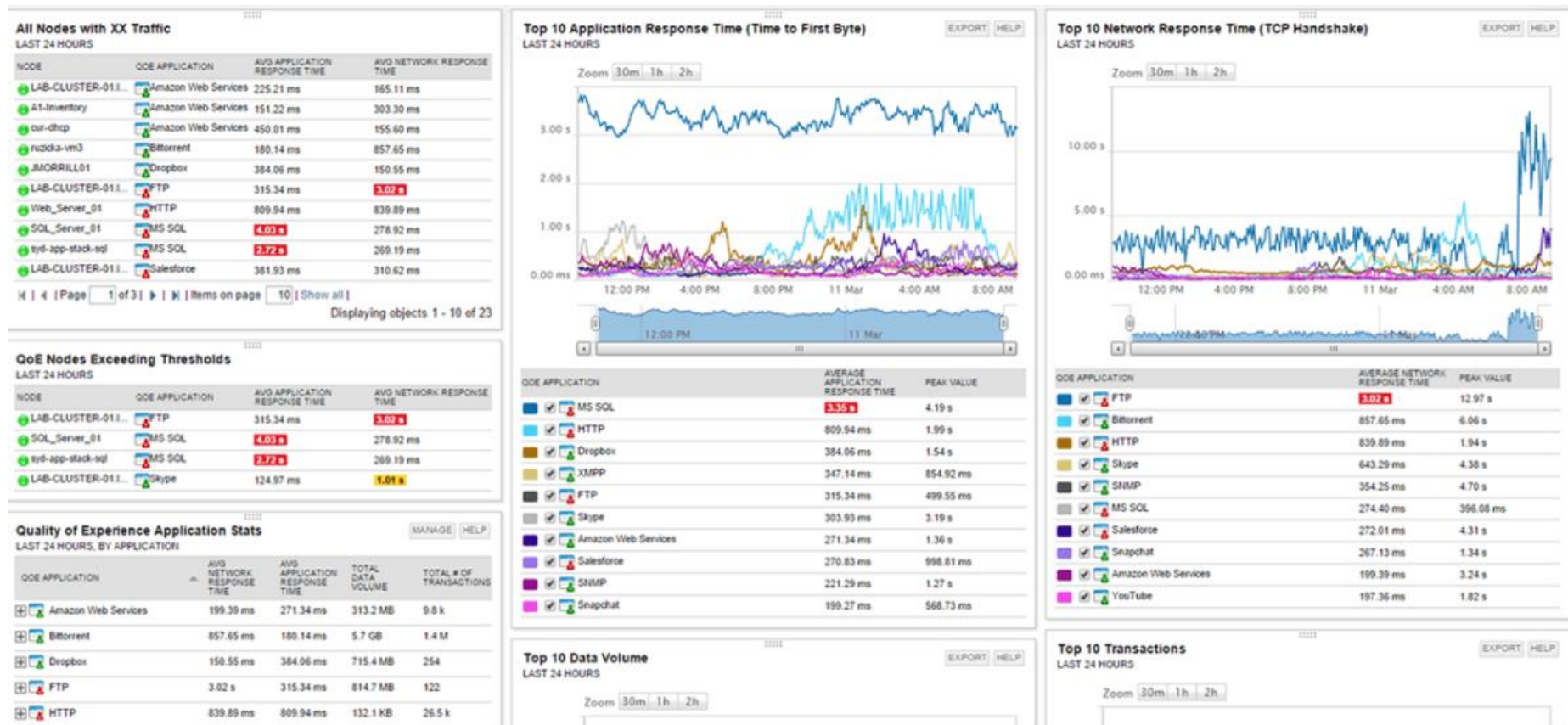


Figure 13: Performance Report Example



## 4.5 Host Service Status Dashboard Example

[View Notifications For All Hosts](#)  
[View Host Status Detail For All Hosts](#)

### Display Filters:

Host Status Types: All  
 Host Properties: Any  
 Service Status Types: All Problems  
 Service Properties: Any

Limit Results: 100 ▾

### Service Status Details For All Hosts

◀ ◻ 1 2 3 ▶▶

Results 0 - 100 of 206 Matching Services

Host	Service	Status	Last Check	Duration	Attempt	Status Information
Log-Server.nagios.local	MySQL Crashed Tables	WARNING	11-14-2015 10:41:20	0d 0h 5m 58s	1/1	WARNING: 3 matching entries found
	Total Processes	WARNING	11-14-2015 10:44:19	1d 14h 23m 0s	1/1	PROCS WARNING: 172 processes
	Youtube Usage	WARNING	11-14-2015 10:41:20	0d 0h 5m 58s	1/1	WARNING: 9 MB/s reported
	Yum Updates	WARNING	07-14-2015 02:32:15	123d 8h 18m 3s	1/1	YUM WARNING: O/S requires an update.
Log-Server2.nagios.local	Bandwidth Spike	WARNING	11-14-2015 10:35:09	0d 0h 12m 9s	1/1	WARNING: 82 MB/s reported
	Total Processes	WARNING	11-14-2015 10:18:59	123d 7h 14m 35s	1/1	PROCS WARNING: 168 processes
	Youtube Usage	WARNING	11-14-2015 10:35:59	0d 0h 12m 9s	1/1	WARNING: 10 MB/s reported
	Yum Updates	WARNING	07-14-2015 04:04:12	123d 8h 16m 51s	1/1	YUM WARNING: O/S requires an update.
NOAA	Weather King Washington	WARNING	11-14-2015 10:37:58	1d 14h 20m 28s	3/3	Weather Warning: Special Weather Statement, Flood Warning, Flood Watch
Network-Analyzer.nagios.local	Total Processes	WARNING	11-14-2015 10:43:40	123d 8h 21m 40s	1/1	PROCS WARNING: 173 processes
	Yum Updates	WARNING	07-14-2015 04:04:44	123d 7h 32m 23s	1/1	YUM WARNING: O/S requires an update.
Network-Analyzer2.nagios.local	Failed SSH Logins	WARNING	11-14-2015 10:01:50	0d 0h 45m 28s	1/1	WARNING: 9 matching entries found
	Total Processes	WARNING	11-14-2015 10:44:19	123d 7h 56m 5s	1/1	PROCS WARNING: 178 processes
	Yum Updates	WARNING	07-14-2015 02:28:00	123d 8h 19m 18s	1/1	YUM WARNING: O/S requires an update.
centos-switch.nagios.local	Port 10 Status	CRITICAL	07-14-2015 04:04:12	123d 7h 42m 23s	1/1	CRITICAL: Interface Port: 10 Gigabit - Level (index 10) is down.
	Port 12 Status	CRITICAL	07-14-2015 04:04:12	123d 8h 21m 40s	1/1	CRITICAL: Interface Port: 12 Gigabit - Level (index 12) is down.
	Port 16 Status	CRITICAL	07-14-2015 04:04:23	123d 8h 21m 3s	1/1	CRITICAL: Interface Port: 16 Gigabit - Level (index 16) is down.
	Port 18 Status	CRITICAL	07-14-2015 03:58:23	123d 7h 33m 16s	1/1	CRITICAL: Interface Port: 18 Gigabit - Level (index 18) is down.
	Port 20 Status	CRITICAL	07-14-2015 04:04:23	123d 7h 32m 23s	1/1	CRITICAL: Interface Port: 20 Gigabit - Level (index 20) is down.
	Port 23 Status	CRITICAL	07-14-2015 04:05:13	123d 7h 21m 54s	1/1	CRITICAL: Interface Port: 23 Gigabit - Level (index 23) is down.
	Port 4 Status	CRITICAL	07-14-2015 03:58:23	123d 7h 43m 5s	1/1	CRITICAL: Interface Port: 4 Gigabit - Level (index 4) is down.

Figure 14: Host Service Status Report Example

## 4.6 Complete Dashboard Example

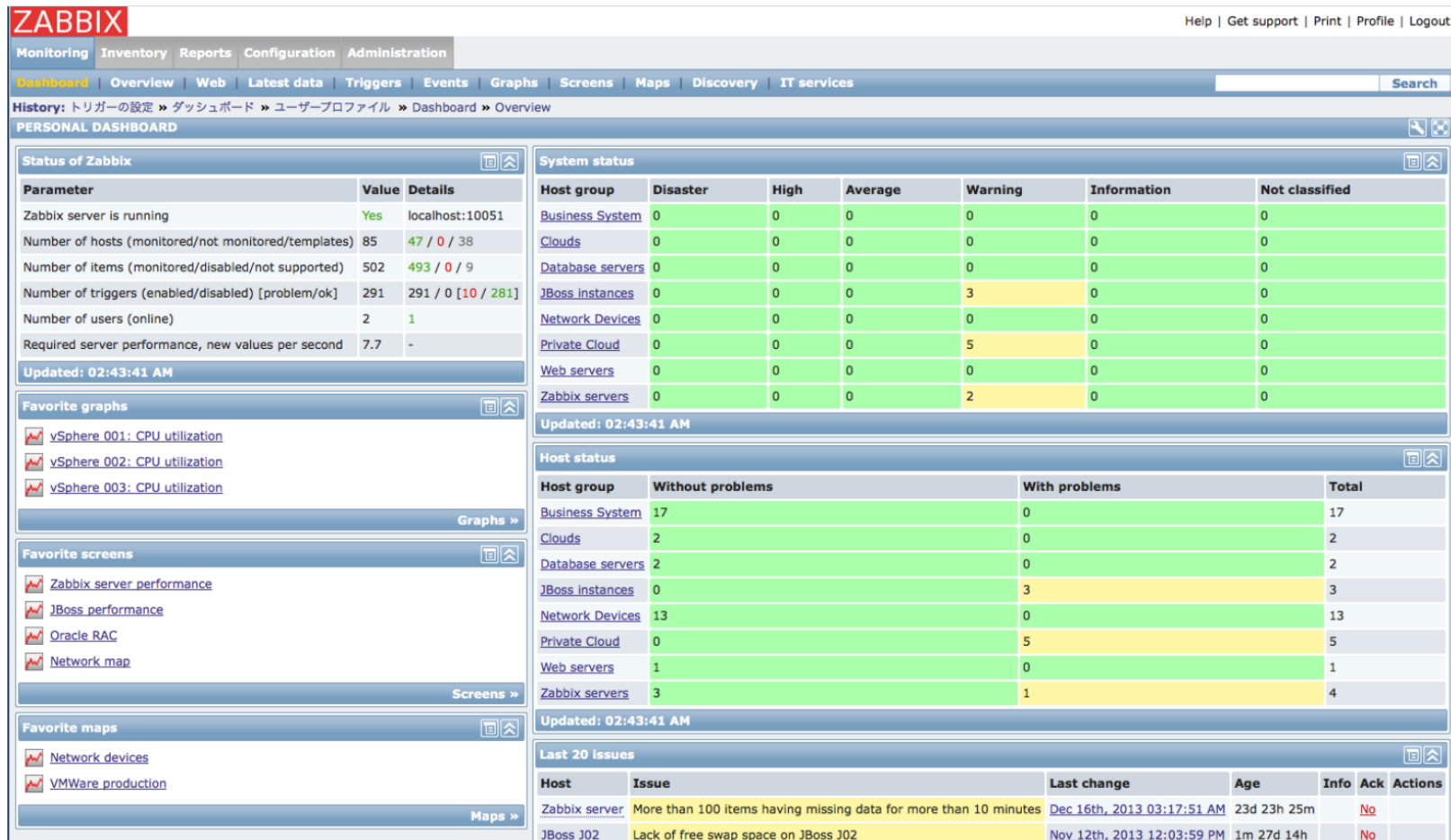


Figure 15: Complete Dashboard Example