



Telephone Number: 011 928 6433  
 Email: [camuhelpdesk@atns.co.za](mailto:camuhelpdesk@atns.co.za)

Last Update: Thursday, 24 November 2022 16:31 South African local time  
 Next Telcon: every week day @ 0630 UTC excl public holidays

**ATC Overview– All times in UTC unless stated otherwise**

**Primary Aerodrome Issues**

Location	Details
<b>FAOR</b>	RAPID EXIT TWY INDICATOR LGT FOR RWY 03R/21L AND 03L/21R U/S.
<b>FACT</b>	<b>F0121/22</b> : FACT ILS Z RWY 19 (ILS-02): PILOTS ARE PROHIBITED FROM FLYING THE PUBLISHED HOLD OR RACETRACK. REFER TO NOTAM FOR PROCEDURE. 5 PALS CAT II LGT RWY 01 U/S. TWY A2 STOPBARS NOT INTERLOCKED. CTC TWR TO FLW PROC.
<b>FALE</b>	ILS CATII RWY24 &06 DOWNGRADED TO CATI DUE SINGLE TRANS OPS. RWY 24 SUBSTATION UNINTERRUPTIBLE POWER SUPPLY (UPS) U/S. IN CASE OF PRI PWR FAILURE, THE FLW FAC WILL NOT BE AVBL FOR 10MIN:1. PAPI RWY 24, 2. TWY M AND H STOPBARS, 3. RTZL 24. DURBAN WX RADAR (294226.07S 0310453.91E) U/S. DURBAN S-BAND PSR AND MSSR (295853.39908S 0305757.11099E) OFFLINE
<b>FALA</b>	ANEMOMETER RWY 25 U/S. AERONAUTICAL AUTOMATED INFORMATION SYSTEM (ANAIS) AND AMHS AGENT TERMINAL INTERFACE SYSTEM (AMATIS) U/S. SAR CANNOT BE NML FOR VFR TFC AND THE APPLICABLE AD CANNOT BE NOMINATED FOR ANY SAR ACTION FOR BOTH VFR AND IFR TFC.
<b>FAGG</b>	
<b>FAPE</b>	STOP BARS RWY 08/26 U/S.
<b>FAEL</b>	GRASS CUTTING TAKING PLACE ON ALL RWY, TWY EDGES, RESA AND LOCALIZER SENSITIVE AREA. DLY 0500-1600 NIL RAPID FILLING HYDRANTS AVBL.
<b>FABL</b>	ALL GUARD LGT, STOP BARS U/S. DLY 0600-1500, GRASS CUTTING WIP ON MANOEUVRING AREA. OPS WILL BE DONE UNDER RDO ESCORT. 10MIN PN TO VACATE.

Telephone Number: 011 928 6433  
 Email: [camuhelpdesk@atns.co.za](mailto:camuhelpdesk@atns.co.za)

Last Update: Thursday, 24 November 2022 16:31 South African local time  
 Next Telcon: every week day @ 0630 UTC excl public holidays

### Secondary Aerodrome Issues

Location	Details
<b>FAKM</b>	
<b>FAKN</b>	
<b>FAPN</b>	ATZ DOWNGRADED TO CLASS D AIRSPACE. NIL MET INFO AVBL. RFFS DOWNGRADED TO CAT II.
<b>FAPP</b>	TWY D/E EDGE LGT U/S.
<b>FAPM</b>	AWOS U/S.
<b>FARB</b>	NIL NGT OPS PERMITTED. TWR CTC NUMBER: 0359075354, SDBY 0711833134. PAPI RWY 05/23 U/S.
<b>FAUT</b>	PRIVATE CLOSE USER GROUP (PCUG) AND TEL LINES U/S. TEMPO CTC TEL NR 0664333871. MID WINDSOCK RWY 14/32 U/S. PAPI RWY 14/32 U/S. ANAIS AND AMATIS U/S. SAR CANNOT BE NML FOR VFR TFC AND THE APPLICABLE AD CANNOT BE NOMINATED FOR ANY SAR ACTION FOR BOTH VFR AND IFR TFC.
<b>FAWB</b>	POTHOLES ON THR RWY 06. ONE THR LGT ON RWY 29 U/S.
<b>FAUP</b>	VOR/DME UPV 116.5 MHZ/CH 112X OFF DUE MAINT. ALL ASSOCIATED PROC SUSPENDED.
<b>FAGM</b>	PAPI RWY 17 U/S. TEL LINES AND PRIVATE CLOSE USER GROUP (PCUG) U/S. TEMPO CTC TEL NR 0726901801.
<b>FAVG</b>	PRIVATE CLOSE USER GROUP (PCUG) AND TEL LINES U/S. TEMPO CTC TEL NR 0794919745. CRASH ALARM AT FIRE STN U/S.

Telephone Number: 011 928 6433  
 Email: [camuhelpdesk@atns.co.za](mailto:camuhelpdesk@atns.co.za)

Last Update: Thursday, 24 November 2022 16:31 South African local time  
 Next Telcon: every week day @ 0630 UTC excl public holidays

### Issues expected to impact service delivery

Location	Details
<b>FAJA</b>	<b>CZV, UPV, U/S, DME SSV CH 83X U/S.</b> <b>HONNIBALL FARM PRIVATE AIRFIELD</b> (284439S 0292614E): PJE/AEROBATICS TAKING PLACE, WI 5NM RADIUS: GND-14000FT AMSL. DLY 0300-1700. <b>DWARSFONTEIN, DELMAS, MPUMALANGA</b> (260242S0284825E): TEMPO DROP ZONE EST. 0600-1500, GND-FL160. <b>FAHG:</b> DLY 0600-1600: 1NM CENTRED ON (263027.94S 0282327.64E): AEROBATICS BOX ESTABLISHED. GND - 9000FT AMSL.
<b>FACA</b>	<b>CSV, SVV, SLV, U/S</b> <b>HUMANSDORP</b> VHF RELAY STN 120.4 MHZ, 127.575 MHZ AND 124.7 MHZ U/S.
<b>FAJO FACA FAJA</b>	<b>FAJO:</b> TRANS & REC U/S. PRI COM IS CPDLC <b>A3931/22</b> <b>A0753/20</b> - AVGAS FUEL SUPPLY CONTAMINATED

### Forecast Military Activity

Location	Details
<b>FAR148</b>	FAR148 ALKANTPAN AND BEYOND: MISSILE FRNG TAKING PLACE.GND/FL600. MON-FRI 0600-1430, EXC HOL
<b>FAR76</b>	ACT MON-FRI 0500-1330, PILOTS TO CALL MAKHADO APP ON 0155772240 OR 121.2 MHZ BFR ROUTING THROUGH.GND-FL 195.
<b>FAR149</b>	FAR149 (FALSE BAY AREA): AREA BOUNDED BY (341107.80S 0182618.00E, 341025.00S 0183639.00E, 341202.00S 0183639.00E): NAVAL GUNNERY FRNG TAKING PLACE. SFC 25000FT AMSL



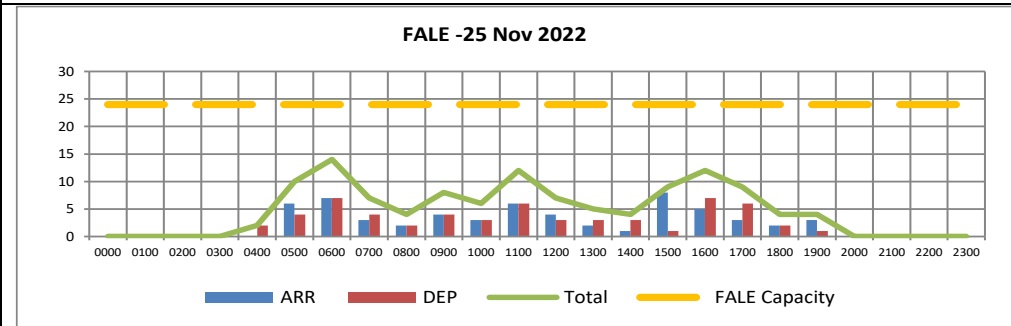
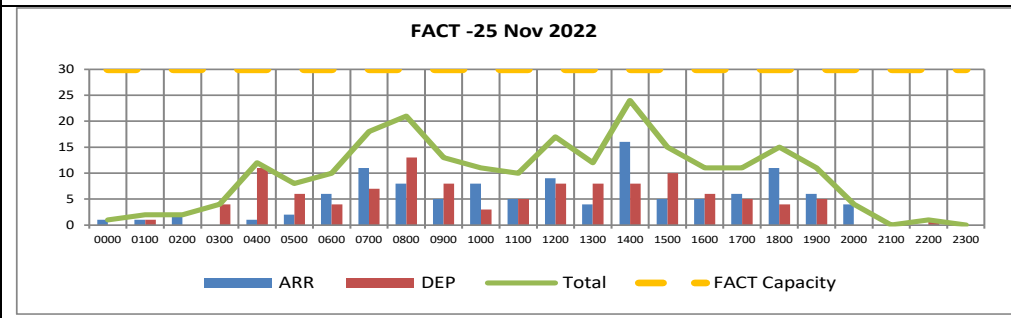
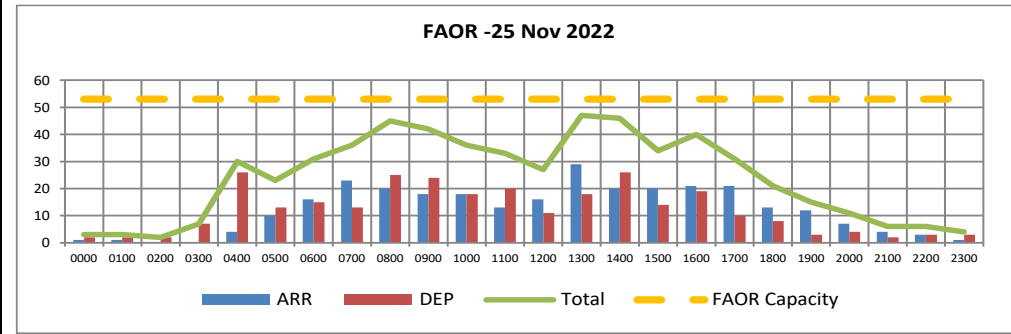
Telephone Number: 011 928 6433  
 Email: [camuhelpdesk@atns.co.za](mailto:camuhelpdesk@atns.co.za)

Last Update: Thursday, 24 November 2022 16:31 South African local time  
 Next Telcon: every week day @ 0630 UTC excl public holidays

Airport Slots Demand (Strategic)

Airport Slots Demand (Strategic)

Capacity	30	30	53	24	24	30	18	18	24	
Airport	FAOR			FACT			FALE			
ARR/DEP/TC	ARR	DEP	TOT	ARR	DEP	TOT	ARR	DEP	TOT	
0000	0100	1	2	3	1	0	1	0	0	0
0100	0200	1	2	3	1	1	2	0	0	0
0200	0300	0	2	2	2	0	2	0	0	0
0300	0400	0	7	7	0	4	4	0	0	0
0400	0500	4	26	30	1	11	12	0	2	2
0500	0600	10	13	23	2	6	8	6	4	10
0600	0700	16	15	31	6	4	10	7	7	14
0700	0800	23	13	36	11	7	18	3	4	7
0800	0900	20	25	45	8	13	21	2	2	4
0900	1000	18	24	42	5	8	13	4	4	8
1000	1100	18	18	36	8	3	11	3	3	6
1100	1200	13	20	33	5	5	10	6	6	12
1200	1300	16	11	27	9	8	17	4	3	7
1300	1400	29	18	47	4	8	12	2	3	5
1400	1500	20	26	46	16	8	24	1	3	4
1500	1600	20	14	34	5	10	15	8	1	9
1600	1700	21	19	40	5	6	11	5	7	12
1700	1800	21	10	31	6	5	11	3	6	9
1800	1900	13	8	21	11	4	15	2	2	4
1900	2000	12	3	15	6	5	11	3	1	4
2000	2100	7	4	11	4	0	4	0	0	0
2100	2200	4	2	6	0	0	0	0	0	0
2200	2300	3	3	6	0	1	1	0	0	0
2300	2400	1	3	4	0	0	0	0	0	0
Above	24	24	42	19	19	24	14	14	19	
Above	27	27	48	22	22	27	16	16	22	





Telephone Number: 011 928 6433  
Email: [camuhelpdesk@atns.co.za](mailto:camuhelpdesk@atns.co.za)

Last Update: Thursday, 24 November 2022 16:31 South African local time  
Next Telcon: every week day @ 0630 UTC excl public holidays

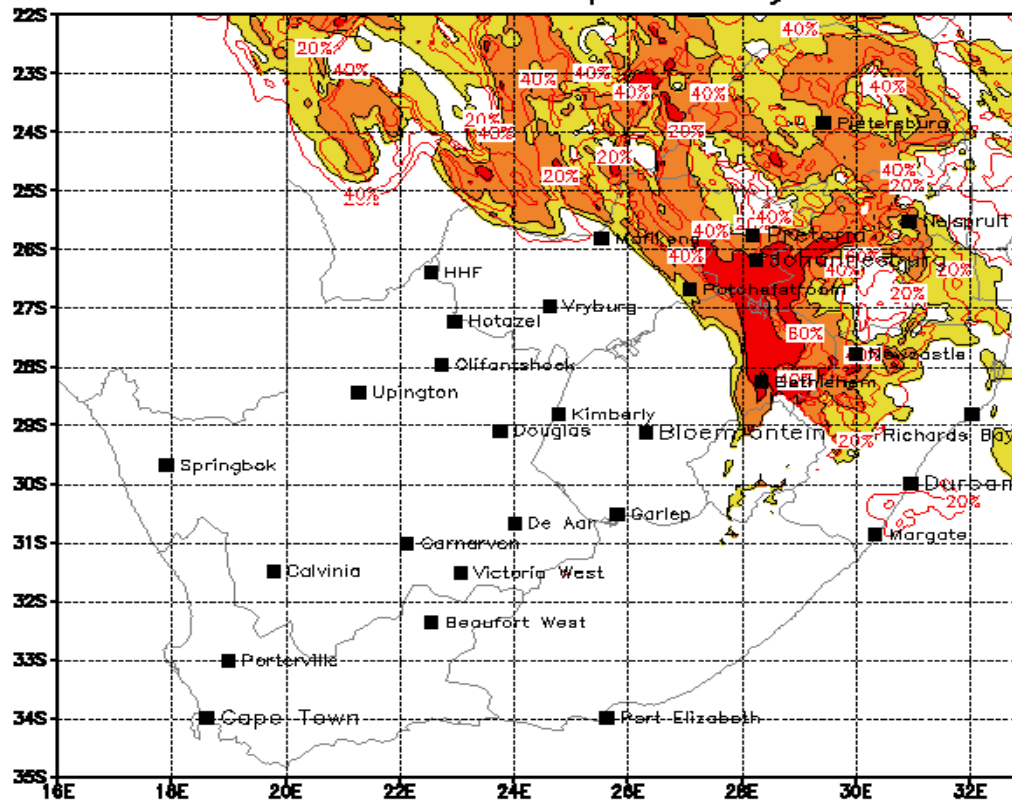
Weather Overview

Thunderstorm Probability

Analysis:00Z 24 NOV 2022

Valid:15Z 25 NOV 2022 SA4

Thunderstorm probability



Thunderstorm distribution: 20%; 40%; 60%; >80%;  
Shaded area=TS prob at 14:00 redlines show 17:00

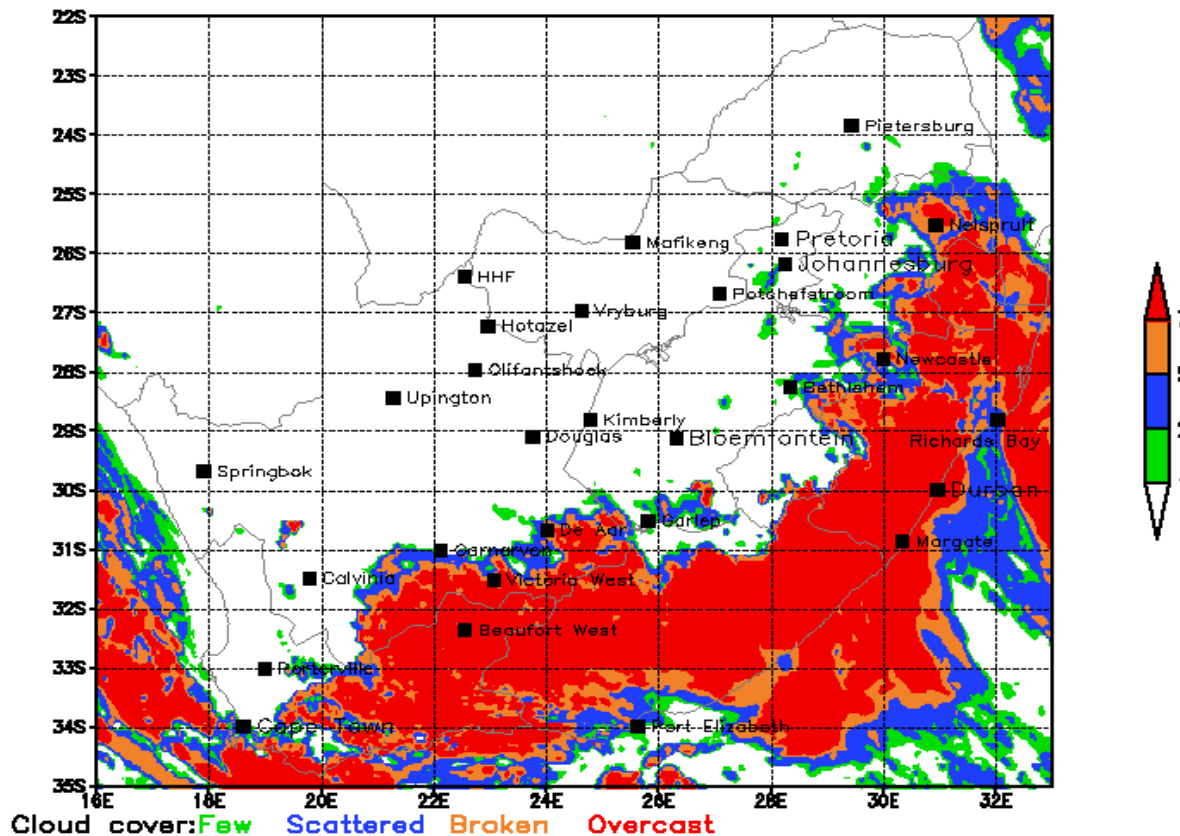


Telephone Number: 011 928 6433  
Email: [camuhelpdesk@atns.co.za](mailto:camuhelpdesk@atns.co.za)

Last Update: Thursday, 24 November 2022 16:31 South African local time  
Next Telcon: every week day @ 0630 UTC excl public holidays

Low Cloud at 04z

Low cloud amount  
6:00 local



Analysis:00Z 24 NOV 2022

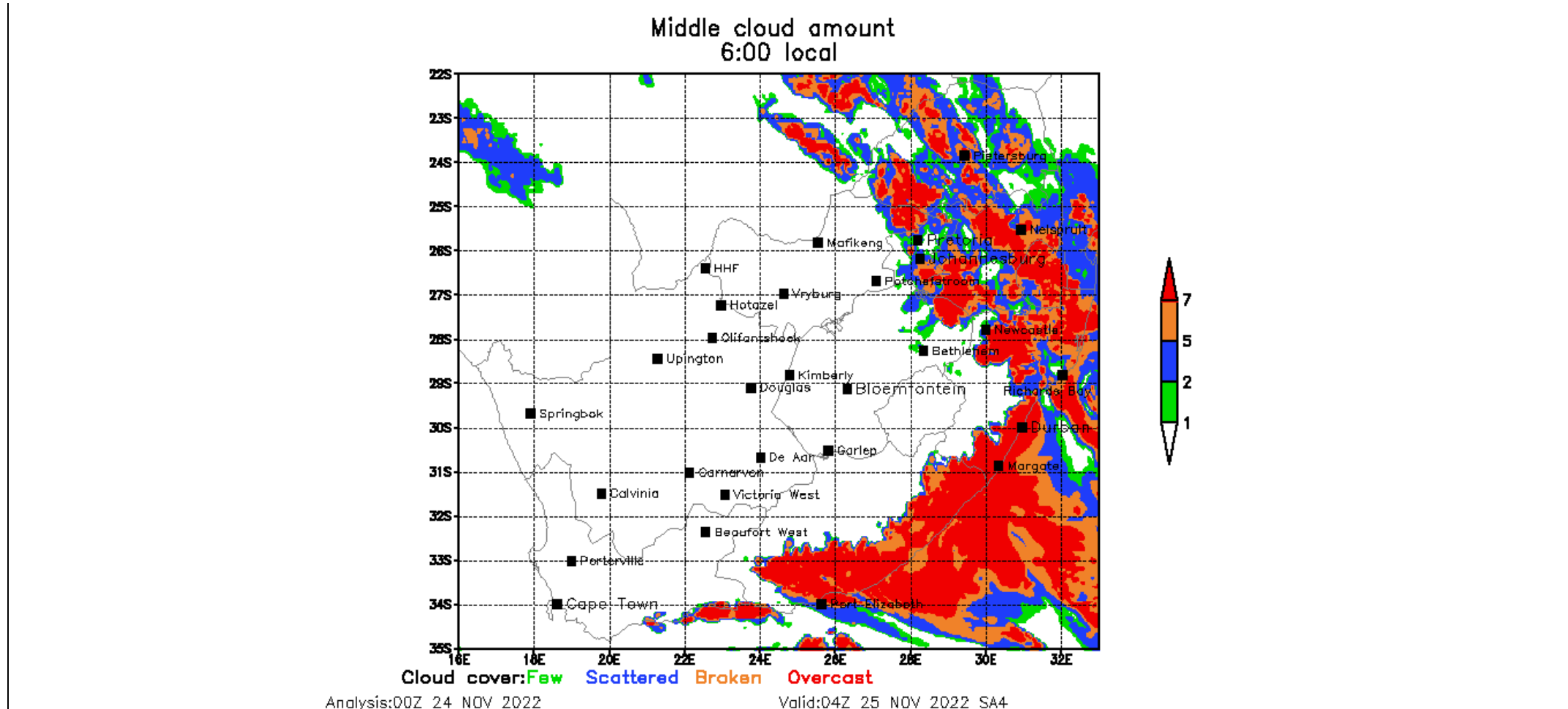
Valid:04Z 25 NOV 2022 SA4



Telephone Number: 011 928 6433  
Email: [camuhelpdesk@atns.co.za](mailto:camuhelpdesk@atns.co.za)

Last Update: Thursday, 24 November 2022 16:31 South African local time  
Next Telcon: every week day @ 0630 UTC excl public holidays

Mid-Level Cloud at 04z





Telephone Number: 011 928 6433  
 Email: [camuhelpdesk@atns.co.za](mailto:camuhelpdesk@atns.co.za)

Last Update: Thursday, 24 November 2022 16:31 South African local time  
 Next Telcon: every week day @ 0630 UTC excl public holidays

**Primary Aerodromes**

Location	Weather (note: IMC = cloud base below 1500ft/red viz of 5000m, LVO = Cloud base below 200ft and RVR of less than 600m)
<b>FAOR</b>	PROB30 <u>TEMPO</u> 2423/2505 - <b>SHRA</b> FEW045 <b>TCU</b> <u>BKN</u> 080 PROB30 <u>TEMPO</u> 2510/2514 - <b>TSRA</b> FEW040 <b>CB</b> PROB40 <u>TEMPO</u> 2514/2518 25015G25KT 5000 <b>TSRA</b>
<b>FACT</b>	2412/2518 23015KT 9999 SCT040
<b>FALE</b>	PROB30 <u>TEMPO</u> 2506/2518 4000 - <b>RA</b> <u>BKN</u> 010
<b>FALA</b>	PROB30 <u>TEMPO</u> 2500/2506 - <b>SHRA</b> FEW045 <b>TCU</b> <u>BKN</u> 090
<b>FAGG</b>	2412/2512 22018KT 9999 FEW010 <u>BKN</u> 040
<b>FAPE</b>	<u>TEMPO</u> 2412/2417 24023G33KT
<b>FABL</b>	CAVOK

Location	Weather

**Warnings and advisories (Overview only. Refer to official products for updates and details)**





Telephone Number: 011 928 6433  
 Email: [camuhelpdesk@atns.co.za](mailto:camuhelpdesk@atns.co.za)

Last Update: Thursday, 24 November 2022 16:31 South African local time  
 Next Telcon: every week day @ 0630 UTC excl public holidays

<b><u>Weather Conditions – Qualitative Overview</u></b>						
	<b>Thunderstorms</b>		<b>Low Cloud/Visibility</b>		<b>Wind/Turbulence</b>	
	<b>AM</b>	<b>PM</b>	<b>AM</b>	<b>PM</b>	<b>AM</b>	<b>PM</b>
<b>FAOR</b>		<b>FM 10Z</b>	<b>TL 05Z</b>			
<b>FACT</b>						
<b>FALE</b>			<b>TL 06Z</b>			
<b>FALA</b>			<b>TL 06Z</b>			
<b>FAGG</b>						
<b>FAPE</b>						<b>FM 12Z</b>
<b>FAEL</b>						
<b>FABL</b>						
<b>FAKM</b>						
<b>FAPP</b>						
<b>FAKN</b>						
		<b>Favourable</b>	Minimal impact to operations expected			
		<b>Marginal</b>	Some potential for operations to be impacted on			
		<b>Unfavourable</b>	Impact on operations likely			